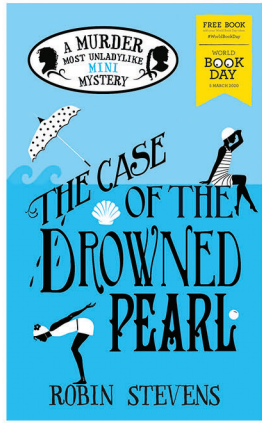




Puffin Activity Pack





Hello, aspiring detectives! Do you have what it takes to join the Detective Society?
Complete the activities below and join Daisy and Hazel in detecting crimes!

Word search:



Hazel

Daisy

Teddy

China

Mooncake

Bunbreak

Murder

L	E	B	D	Q	Z	C	T	R	K
O	D	K	P	A	H	V	E	B	A
S	B	J	A	I	I	D	D	V	E
L	X	X	N	C	R	S	D	O	R
O	T	A	F	U	N	J	Y	E	B
D	M	G	M	K	W	O	G	I	N
K	N	P	U	V	G	U	O	M	U
J	Y	W	Q	S	P	Y	S	M	B
U	R	E	T	W	F	L	Q	N	R
H	A	Z	E	L	B	Y	H	L	V



Create your own Detective Society Pledge!

Your pledge is a sort of promise. Here's part of Daisy and Hazel's in case it helps:

'I swear to be a good and clever member of the Detective Society, and to logically detect the crimes presented to me using all the cleverness I have, not placing reliance on grown-ups, especially the police.'

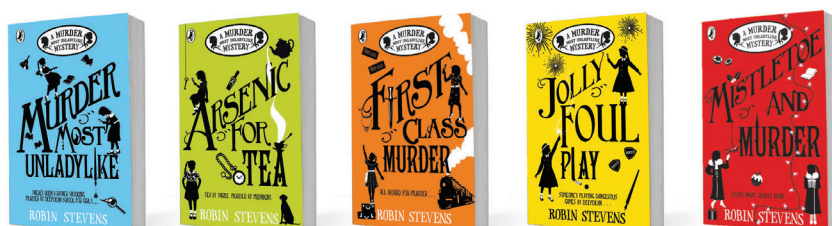
Fill in the lines below with your own pledge!





DEEPDEAN SCHOOL CREST

Print out, cut and colour in the template below to create your very own Detective Society crest! Attach it to a jacket or blazer to look ever so official.



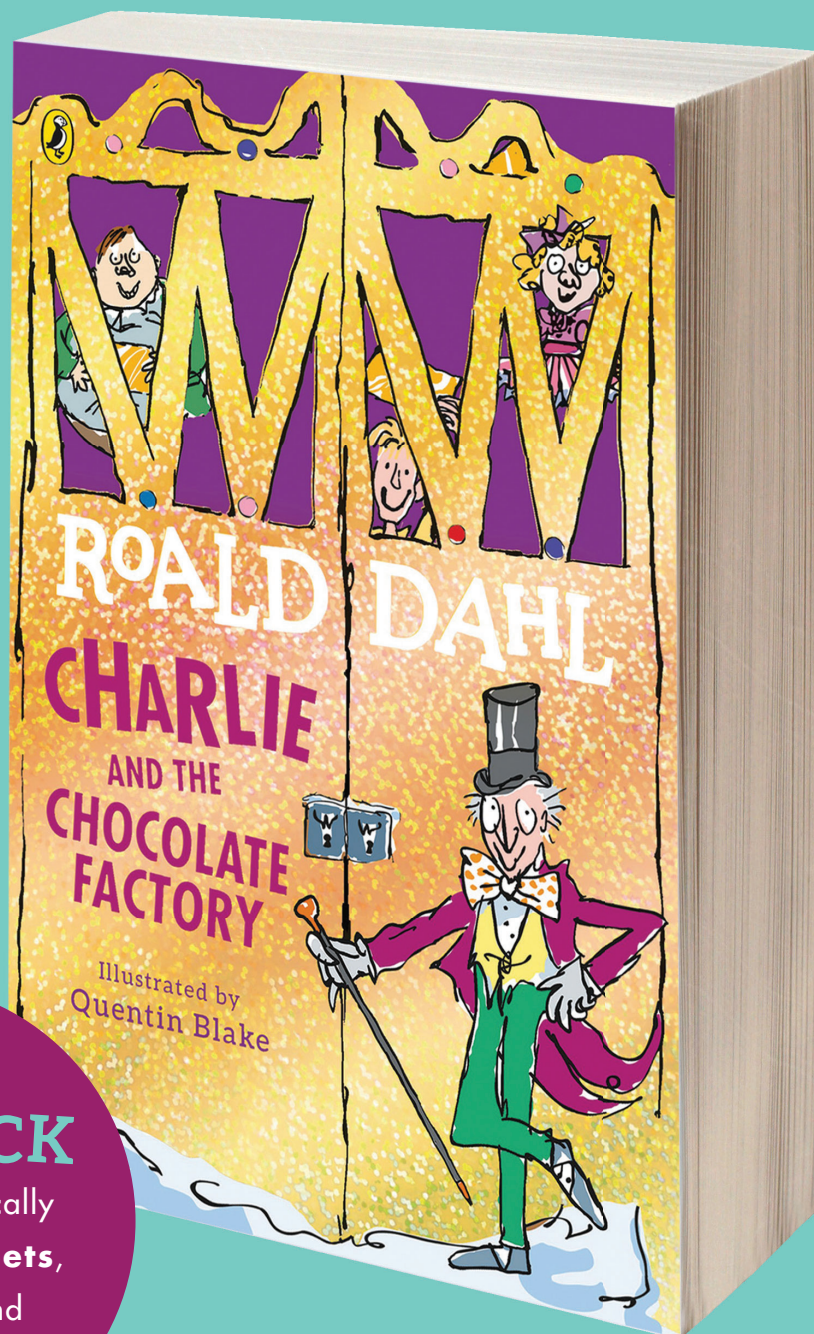
#MurderMostUnladylike @redbreastedbird @PuffinBooks

Image courtesy of Dustin Hansen.



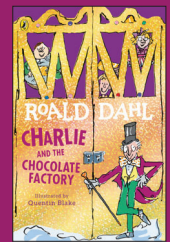
ROALD DAHL

CHARLIE AND THE CHOCOLATE FACTORY



FUN PACK

Including fantastically fun **activity sheets**, a book **quiz** and **dress-up** ideas!



1 WHAT DO CHARLIE'S GRANDPARENTS DO ALL DAY IN **CHARLIE AND THE CHOCOLATE FACTORY**?

- a) They eat sweets
- b) They stay in bed
- c) They play cards

2 IN **GEORGE'S MARVELLOUS MEDICINE**, WHAT COLOUR IS THE MEDICINE AFTER GEORGE BOILS IT?

- a) Gorgeous gruesome green
- b) Fearsome fiery red
- c) Deep and brilliant blue

3 IN **MATILDA**, WHICH PUNISHMENT DOES MISS TRUNCHBULL GIVE BRUCE BOGTROTTER?

- a) Puts him in The Chokey
- b) Forces him to eat an enormous cake
- c) Makes him touch a newt

4 IN **CHARLIE AND THE CHOCOLATE FACTORY**, WHERE CAN YOU FIND WHANGDOODLES, HORNSWOGGLERS AND SNOZZWANGERS?

- a) In Caterpillar Country
- b) In Loompaland
- c) In Eucalyptus Land

5 WHAT DOES GRANDMA TELL GEORGE TO EAT THREE TIMES A DAY IN **GEORGE'S MARVELLOUS MEDICINE**?

- a) Cauliflower
- b) Cabbage
- c) Curly kale

6 IN **BILLY AND THE MINPINS**, WHAT IS THE LEADER OF THE MINPINS CALLED?

- a) Don Mini
- b) Don Mono
- c) Don Mani

7 IN **MATILDA**, WHAT FIRST AMAZES MISS HONEY ABOUT MATILDA?

- a) Her mathematical ability
- b) Her musical ability
- c) Her reading ability

8 WHAT ARE THE NAMES OF THE THREE FARMERS IN **FANTASTIC MR FOX**?

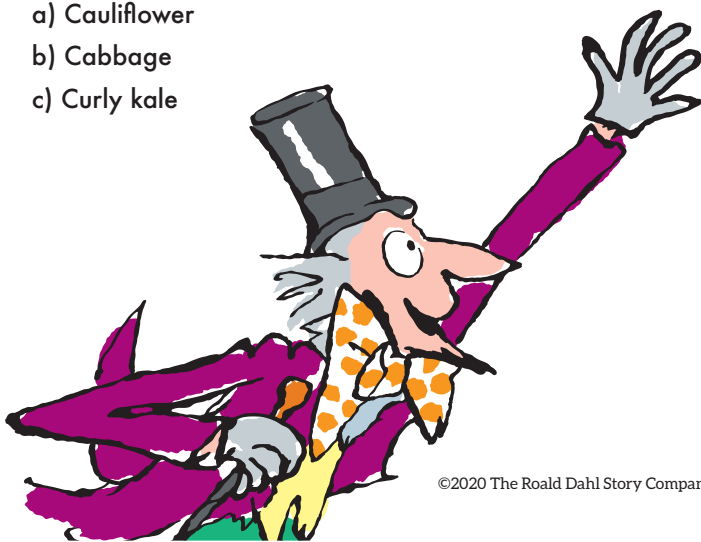
- a) Doggis, Dunce and Lean
- b) Moggis, Munce and Mean
- c) Boggis, Bunce and Bean

9 IN **GEORGE'S MARVELLOUS MEDICINE**, WHAT HAPPENS TO GRANDMA WHEN SHE DRINKS MARVELLOUS MEDICINE NUMBER FOUR?

- a) She disappears
- b) She blows up
- c) She bursts her boiler

10 IN **THE GIRAFFE AND THE PELLY AND ME**, WHAT DOES THE WORD 'GRUBBER' MEAN?

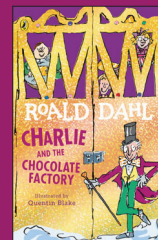
- a) It is an old word for a sweet shop
- b) It is a name for someone who is very dirty
- c) It is a name for someone who eats too quickly



ROALD DAHL

CHARLIE AND THE CHOCOLATE FACTORY

INVENTING ROOM



"This is the most important room in the entire factory!" he said. "All my most secret new inventions are cooking and simmering in here!"

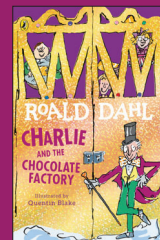
Imagine if you were an extraordinary inventor like Mr Willy Wonka! What would you invent; hot ice-cream for cold days, Hair Toffee or even an Everlasting Gobstopper? Draw a picture and describe your new creation!



ROALD DAHL

CHARLIE AND THE CHOCOLATE FACTORY

INVENT YOUR OWN SWEET



Time to present your sweet to Mr Wonka! Write a short presentation about your sweet to persuade Willy Wonka to hire you as his new inventor. Use the table below to make some notes first.

NAME OF MY SWEET	
MY SWEET'S PARTICULAR FUNCTION	
REASON PEOPLE WILL BUY MY SWEET	
SOME POWERFUL VERBS AND ADJECTIVES TO DESCRIBE MY SWEET	
A BOLD STATEMENT OR CLAIM ABOUT MY SWEET TO FINISH	

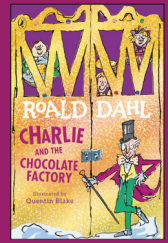
Now write your presentation. Remember, Willy Wonka is very busy so he won't listen for long! Keep your presentation to five sentences or less.

FIND MORE LEARNING RESOURCES AT
WWW.ROALDDAHL.COM/TEACH

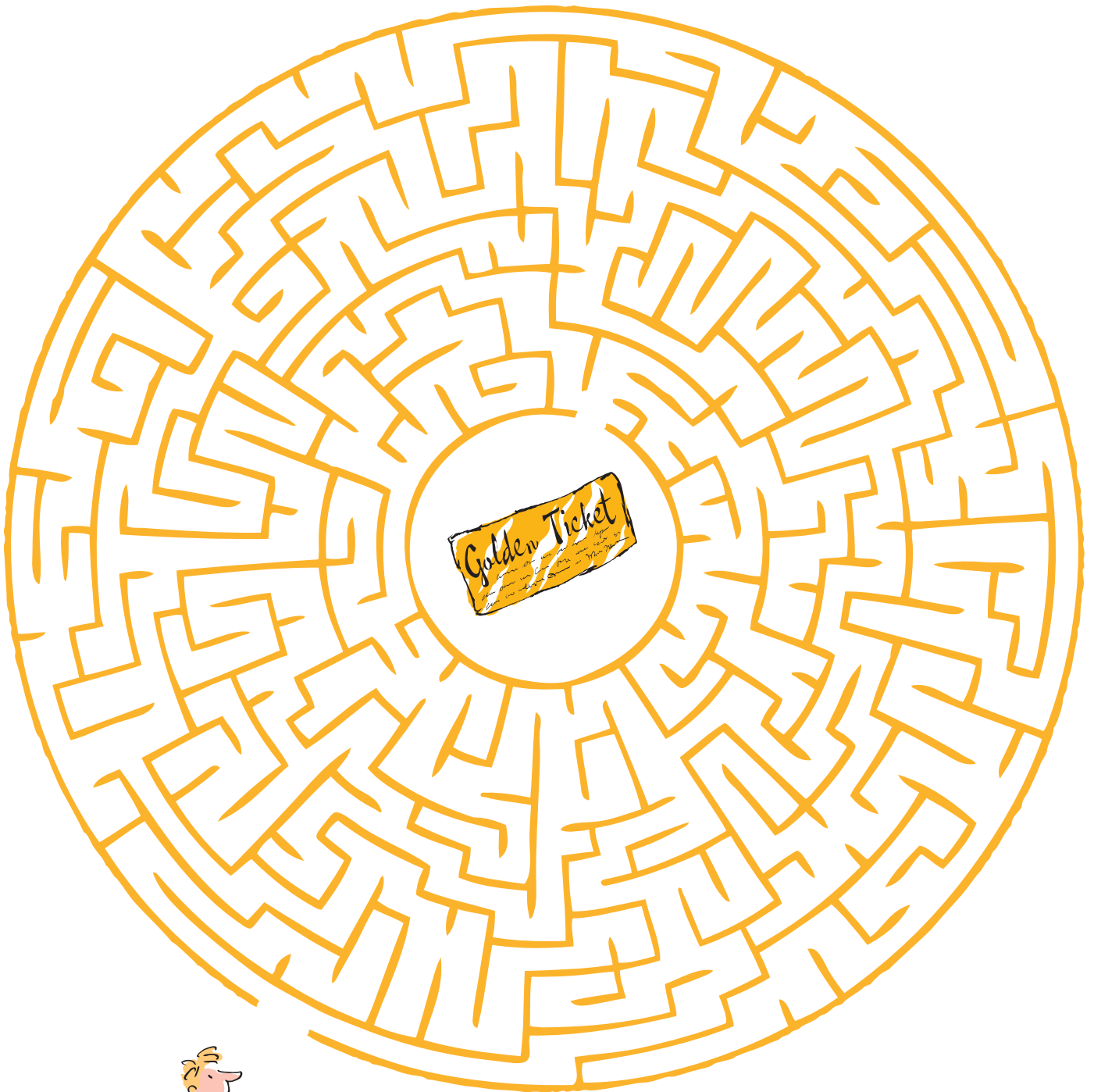
ROALD DAHL

CHARLIE AND THE CHOCOLATE FACTORY

GOLDEN TICKET MAZE



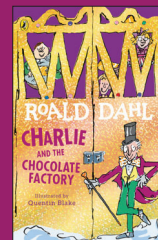
Charlie's lost his Golden Ticket! He needs to get into Willy Wonka's factory so he can feast on scrumdiddlyumptious treats. Help him find his ticket in the maze below.



ROALD DAHL

CHARLIE AND THE CHOCOLATE FACTORY

WILLY WONKA'S PICK 'N' MIX



Which of Willy Wonka's wonderful ingredients isn't in the wordsearch because greedy Augustus Gloop has eaten it all?

CACAO
CHOCOLATE
NUT

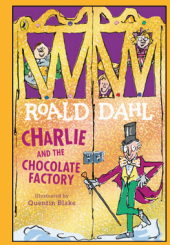
CARAMEL
CANDY
TOFFEE

CREAM
SUGAR
BUTTERSCOTCH

R	A	C	A	C	A	O	L	P	M	Y	R	O	E	Y	K
X	Y	N	Z	G	O	X	P	Y	N	X	N	U	T	B	L
E	A	P	F	V	F	B	X	B	G	G	J	G	O	Q	D
X	F	E	X	M	O	W	C	U	I	C	N	A	D	C	F
Q	W	Z	E	E	S	U	H	T	E	Y	R	H	Z	L	K
P	F	D	W	Q	V	T	R	T	U	A	U	E	Q	I	A
F	S	G	C	A	R	A	M	E	L	I	M	W	A	E	N
G	F	A	S	R	L	T	E	R	O	Q	J	V	P	M	J
B	T	H	B	G	R	S	A	S	B	D	T	P	C	H	X
R	I	O	M	S	I	D	K	C	J	H	O	D	B	J	M
O	H	T	F	S	T	S	R	O	R	B	K	Y	Z	Q	K
G	C	G	L	F	H	Z	N	T	C	U	W	D	C	J	P
I	Y	W	T	A	E	U	S	C	M	L	V	N	L	I	L
H	C	Y	Q	J	K	E	N	H	V	K	S	A	R	Z	N
D	N	M	U	P	U	W	O	I	W	T	X	C	Q	K	J
U	R	A	G	U	S	Z	V	B	V	C	Y	J	D	M	Y

AUGUSTUS GLOOP HAS EATEN ALL THE





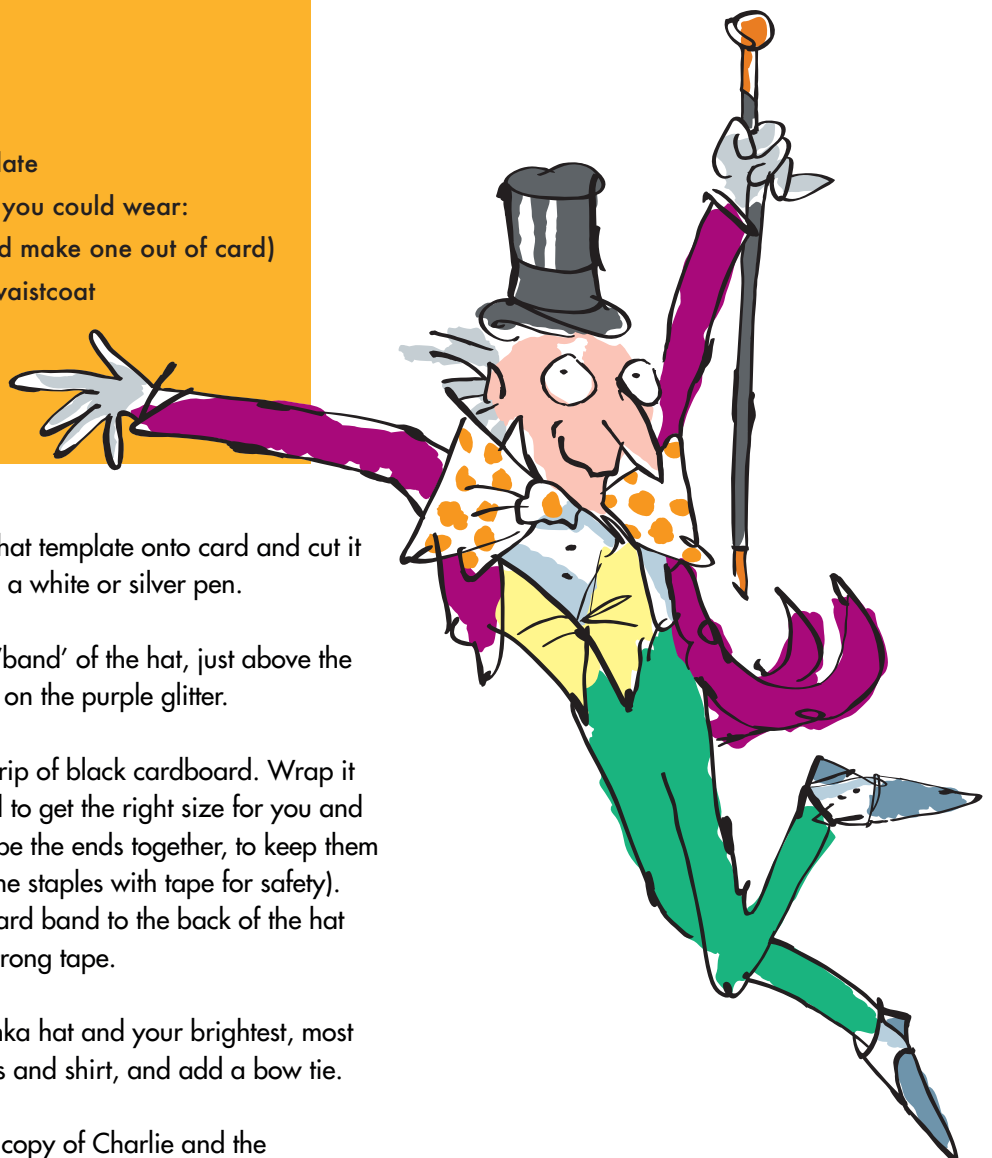
“Mr Wonka was standing all alone just inside the open gates of the factory. And what an extraordinary little man he was! He had a black top hat on his head. He wore a tail coat made of a beautiful plum-coloured velvet. His trousers were bottle green. His gloves were pearly grey. And in one hand he carried a fine gold-topped walking cane.”

YOU WILL NEED:

- Black A2 card (or a cereal box you can paint)
- A white or silver pen
- Purple glitter
- Glue
- Pencil
- Scissors
- Strong tape or a stapler
- Downloadable hat template
- Bright colourful clothes - you could wear:
 - A bow tie (you could make one out of card)
 - A purple jacket or waistcoat
 - Green trousers
 - A cane

30

MINUTE
ACTIVITY

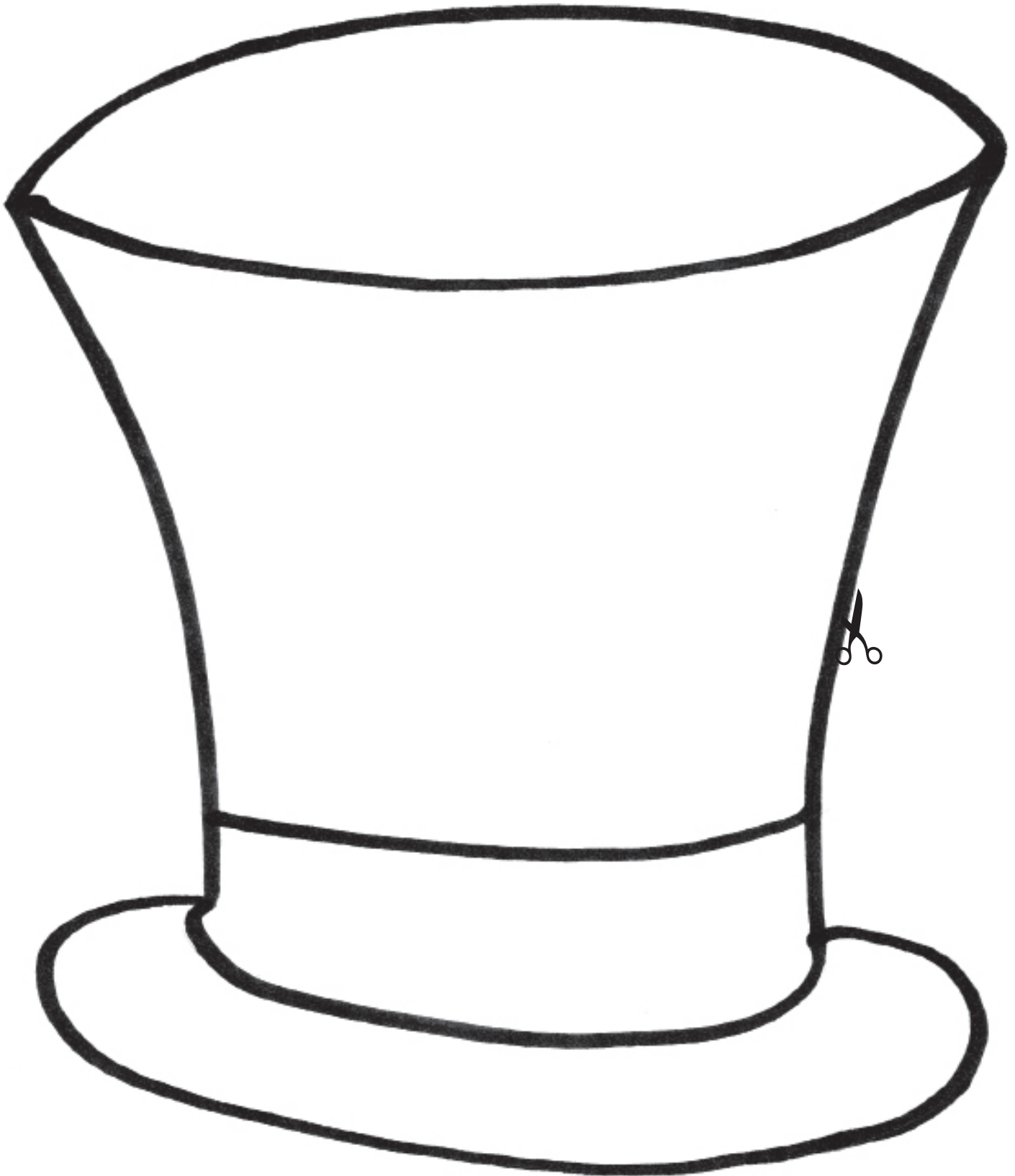
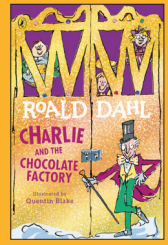


- 1** Trace round the hat template onto card and cut it out. Outline with a white or silver pen.
- 2** Add glue to the ‘band’ of the hat, just above the brim, and shake on the purple glitter.
- 3** Cut out a long strip of black cardboard. Wrap it round your head to get the right size for you and then staple or tape the ends together, to keep them in place (cover the staples with tape for safety). Stick the cardboard band to the back of the hat with staples or strong tape.
- 4** Put on your Wonka hat and your brightest, most colourful trousers and shirt, and add a bow tie.
- 5** Take along your copy of Charlie and the Chocolate Factory and your costume is complete!

ROALD
DAHL

CHARLIE AND THE CHOCOLATE
FACTORY

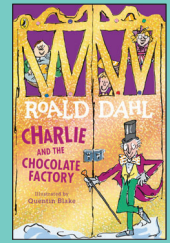
TOP HAT TEMPLATE



ROALD DAHL

CHARLIE AND THE CHOCOLATE FACTORY

HOW TO DRESS UP AS CHARLIE BUCKET



“Only once a year, on his birthday, did Charlie Bucket ever get to taste a bit of chocolate. The whole family saved up their money for that special occasion, and when the great day arrived, Charlie was always presented with one small chocolate bar to eat all by himself.”



5

MINUTE
ACTIVITY

YOU WILL NEED:

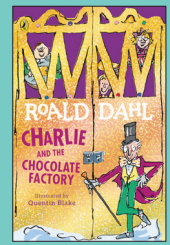
- Golden Ticket template
- Scissors
- A chocolate bar
- A jumper or checked shirt

- 1** Cut out the Golden Ticket from the template provided (or you could make your own with some gold paper and a black pen).
- 2** Wear a jumper or checked shirt and a pair of trousers.
- 3** Carry a small bar of chocolate in your pocket.
- 4** Take along your copy of Charlie and the Chocolate Factory and your costume is complete!

ROALD
DAHL

CHARLIE AND THE CHOCOLATE
FACTORY


GOLDEN TICKET TEMPLATE

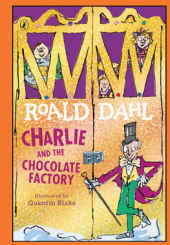


—●— Wonka ●—

Golden Ticket

Many wonderful surprises await you!





“The one I want to see is Veruca Salt!” shouted another voice in the crowd. ‘She’s the girl whose father bought up half a million chocolate bars and then made the workers in his peanut factory unwrap every one of them until they found a Golden Ticket! He gives her anything she wants! Absolutely anything! She only has to start screaming for it and she gets it!’”

YOU WILL NEED:

- A party dress or skirt
- A ribbon or giant bow for your hair
- A toy squirrel

- 1 Wear a party dress or skirt.
- 2 Tie a big bow in your hair.
- 3 Carry a toy squirrel with you.
- 4 Take along your copy of Charlie and the Chocolate Factory and your costume is complete!

2

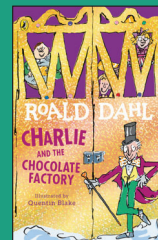
MINUTE
ACTIVITY



ROALD DAHL

CHARLIE AND THE CHOCOLATE FACTORY

HOW TO DRESS UP AS MIKE TEAVEE



"The nine-year-old boy was seated before an enormous television set, with his eyes glued to the screen... 'Quiet!' he shouted, when someone tried to ask him a question. 'Didn't I tell you not to interrupt! This show's an absolute whiz-banger! It's terrific! I watch it every day. I watch all of them every day, even the rotten ones...'"



5

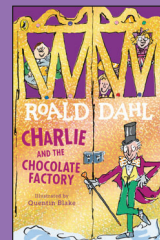
MINUTE
ACTIVITY

YOU WILL NEED:

- A shirt
- Jeans
- A cowboy hat
- A TV remote

- 1 Wear a pair of jeans and a shirt.
- 2 Wear a cowboy hat on your head.
- 3 Carry a TV remote in your pocket.
- 4 Take along your copy of Charlie and the Chocolate Factory and your costume is complete!





“The finder was a boy called Augustus Gloop, and Mr Bucket’s evening newspaper carried a large picture of him on the front page. The picture showed a nine-year-old boy who was so enormously fat he looked as though he had been blown up with a powerful pump.”

YOU WILL NEED:

- A bright or striped jumper
- Trousers
- A pillow
- Scissors
- Downloadable chocolate bar template or chocolate bar
- Chocolate wrappers
- Brown face paint or melted chocolate (optional)

10

MINUTE
ACTIVITY

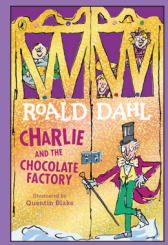
- 1 Cut out the chocolate Bar template provided (or you could bring your own).
- 2 Wear a bright jumper and trousers.
- 3 Stuff a pillow into your jumper.
- 4 Smear chocolate around your mouth (or use brown face paint).
- 5 Stuff lots of chocolate wrappers into your pockets.
- 6 Take along your copy of Charlie and the Chocolate Factory and your costume is complete!

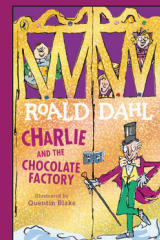


ROALD
DAHL

CHARLIE AND THE CHOCOLATE
FACTORY

CHOCOLATE BAR TEMPLATE





“Everybody was staring at Violet. And what a terrible, peculiar sight she was! Her face and hands and legs and neck, in fact the skin all over her body, as well as her great big mop of curly hair, had turned a brilliant, purplish-blue, the colour of blueberry juice!”

YOU WILL NEED:

- A 36 inch giant balloon
- Newspaper (lots of newspaper!)
- Plain flour and water
- Scissors
- Tape
- Purple or blue paint
- Two ribbons
- A stapler
- Purple or blue face paint
- A purple or blue top
- Purple or blue trousers or tights

3-4

DAY
ACTIVITY

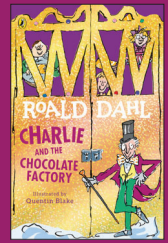
- 1 Make your papier mâché paste, using equal amounts of water and plain flour. The paste should be a thick glue-like texture. If it's too thick, add a bit more water. Tear the newspaper into long thin strips. Inflate the balloon and set it in a box to keep it from rolling around. Begin your first layer of papier mâché: dip each strip of newspaper with papier mâché, then place it on the balloon. Cover the balloon in one layer of strips and let it dry completely.
- 2 Repeat three more times so the ball is nice and strong. Once the final layer is dry, deflate the balloon.
- 3 Cut a hole at the top and bottom of the ball that is big enough for you to fit through (ask a grown-up to help!). Make sure the bottom hole is big enough for you to move your legs when walking!
- 4 Paint the entire ball purple (or blue) using poster paint and leave to dry. Add the ribbons to the top hole to create shoulder straps.
- 5 Wear your purplest (or bluest) clothes and paint your face to match. Very carefully, put on your blueberry-ball costume.
- 6 Take along your copy of Charlie and the Chocolate Factory and your costume is complete!



ROALD
DAHL

CHARLIE AND THE CHOCOLATE FACTORY

QUIZ ANSWERS



- 1 b) They stay in bed
- 2 c) Deep and brilliant blue
- 3 b) Forces him to eat an enormous cake
- 4 b) In Loompland
- 5 b) Cabbage
- 6 a) Don Mini
- 7 a) Her mathematical ability
- 8 c) Boggis, Bunce and Bean
- 9 a) She disappears
- 10 a) It is an old word for a sweet shop



DIARY OF AN Awesome Friendly Kid

Become Rowley Jefferson

HOW TO CREATE YOUR MASK:

1. Cut around the dotted lines (be careful and ask a grown-up for help).
2. Push a piece of string or elastic through the holes and tie it behind your head or you could glue a chopstick to the bottom and hold it.
3. You're now ready to make like your favourite Wimpy Kid Character. BOOH-YAH!



Diary of a Wimpy Kid

Become Greg Heffley



HOW TO CREATE YOUR MASK:

1. Cut around the dotted lines (be careful and ask a grown-up for help).
2. Push a piece of string or elastic through the holes and tie it behind your head or you could glue a chopstick to the bottom and hold it.
3. You're now ready to make like your favourite Wimpy Kid Character. BOOH-YAH!



The funniest books you'll ever read . . .

DIARY OF A WIMPY KID™, WIMPY KID™, the Greg Heffley design™, and the design of the book jackets are trademarks and trade dress of Wimpy Kid, Inc. All rights reserved.



www.wimpykidclub.co.uk