

PUMPKIN GARDEN

Create a garden of ghoulish gourds—it's as easy as pumpkin pie! Pick orange pieces for ripe pumpkins and green for unripe ones. Why not make one pumpkin hollow to hold a little Halloween treat.

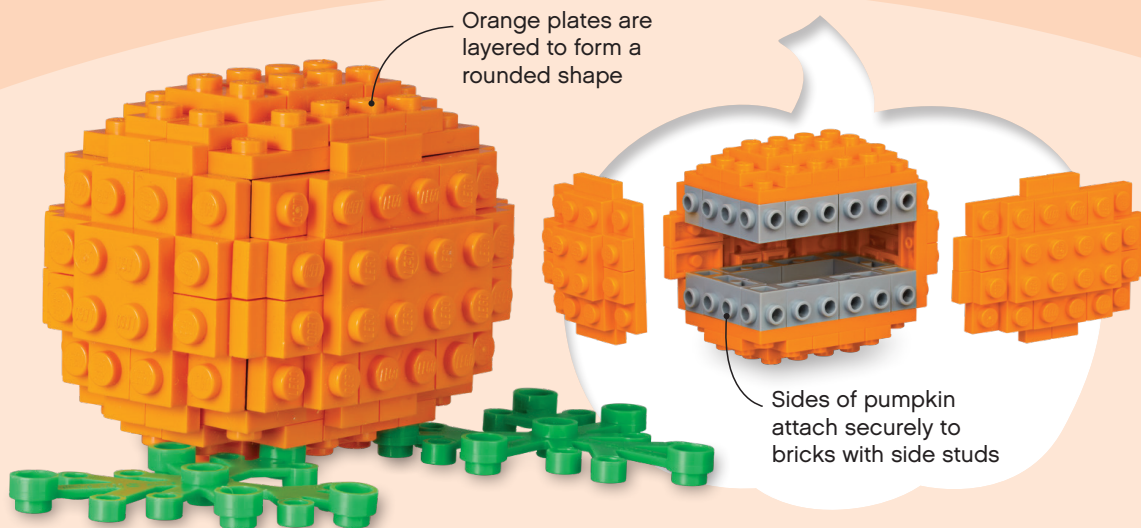


Curved bricks attach to plates with clips



Upside-down radar dish

Sprawling plant leaves



Orange plates are layered to form a rounded shape

Sides of pumpkin attach securely to bricks with side studs

SPOOKY SKULLS

Build some super skull table decorations. Use LEGO® elements of all shapes and colors to make unusual eyes, noses, and mouths. Then your skulls are sure to surprise your party guests!



Build skull shape from curved and rectangular plates

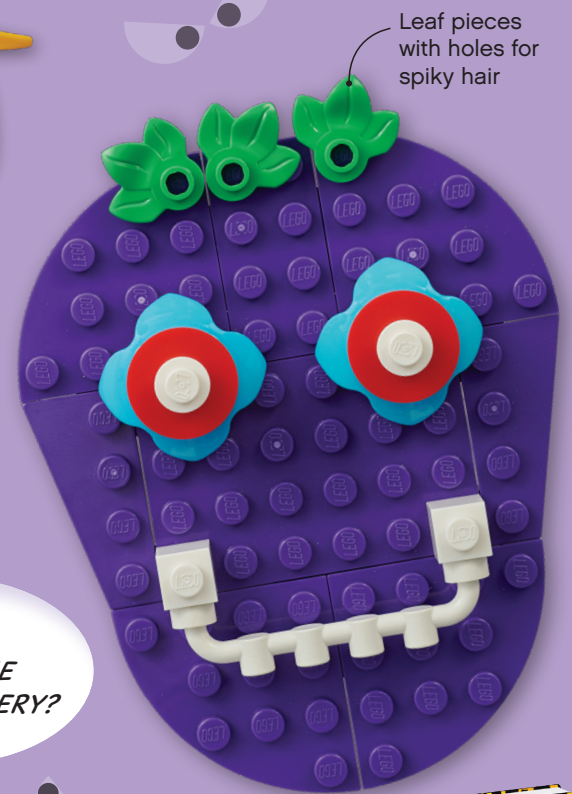


Wave flames look like horns

Bat wings

3x2 tiles with holes as lips

READY FOR SOME SKULLDUGGERY?



Leaf pieces with holes for spiky hair



HALLOWEEN BUILD CHALLENGE

Test your creativity and brush up your building skills with this fun LEGO® challenge. You will need quick fingers and a quick mind to win this Halloween-themed game!

HOW TO PLAY

- 1 Each player writes five build ideas on pieces of paper.
- 2 Fold the papers and put them into a bag. Everyone then picks an idea out at random.
- 3 Set a timer for five minutes, and get building!
- 4 When the time is up, players try to guess what each build is.
- 5 A correct guess gets the builder and guesser two points each. The top scorer is the winner.

Gather a few handfuls of random bricks



Claw and radar dish witch's hat



WITCH

Purple robes for Halloween party dress



POTION BOTTLE

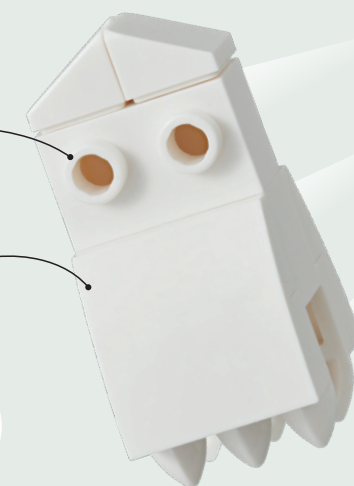
Transparent round bricks and dome top



VAMPIRE

Studs look like spooky eyes

Two curved slopes form ghost's shape



GHOST

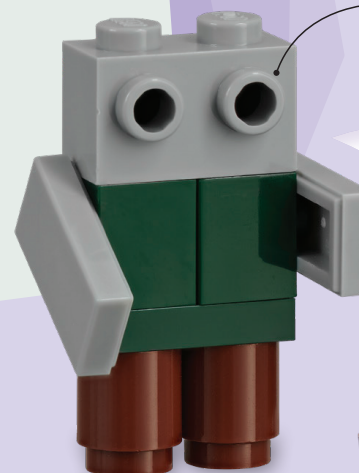
FANGS FOR PLAYING!

Slope gives look of long, black cloak

TRY THIS

Vary the game by having each player pick a minifigure out of a bag, then build a Halloween object associated with their minifigure.

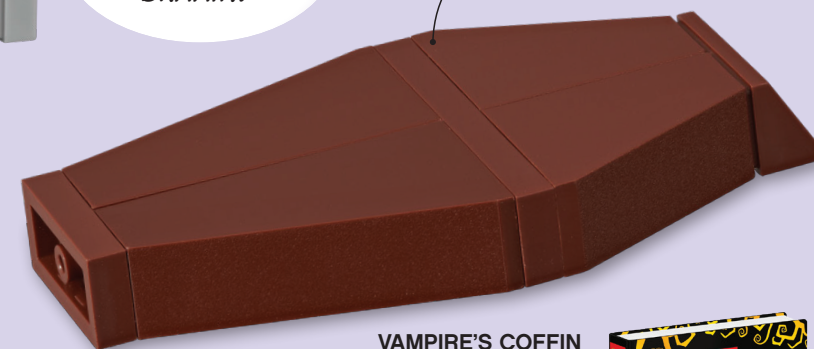
1x2 brick with side studs is perfect as a zombie's head



ZOMBIE

THIS GAME WILL TEST YOUR BRAAIN!

Choose brown bricks to look like wood



VAMPIRE'S COFFIN

