



MEET NEW ZEALAND'S NIGHT CREATURES



RURU/MOREPORK

A small native owl. Its round eyes look straight ahead, but it can turn its head right around to the back.



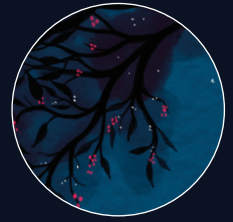
HARA / GIANT CENTIPEDE

Usually found under stones or logs, giant centipedes grow up to 25 centimetres long. They have a poisonous bite.



TUNA / EEL

It can grow to 30 kilograms in weight and live up to 80 years. A young eel can climb along damp ground and even up waterfalls.



TITIWAI / GLOW-WORM

Glow-worms cling to damp walls in caves and trap insects by hanging sticky threads from their blue-green glowing bottoms.



PEPEKETUA / NATIVE FROG

Tiny and hard to spot. Unlike other frogs, they have round eyes, squeak rather than croak, and don't have a tadpole stage.



PEPETUNA / PŪRIRI MOTH

The moth lives for only a couple of nights. However as a caterpillar it can live for five years, burrowed into the wood of the pūriri tree.



KIWI

This flightless bird has feathers that are more like hair. It has nostrils at the end of its bill, which it uses to sniff and dig for food.



WĒTĀ PUNGA

A giant wētā can grow as big as a mouse. Its skeleton is outside its body and it has spines on its strong back legs.



GECKO

The little nocturnal lizard has toes and pads under its feet that help it to climb up trees and plants. It cleans its eyes with its tongue.



PEKAPEKA / BAT

It lives in caves and trees, and sometimes makes a squealing noise. It uses radar for hunting and finding its way.



KĀKĀPŌ

The world's only flightless nocturnal parrot, and the heaviest. The male makes a loud booming noise to attract a mate.



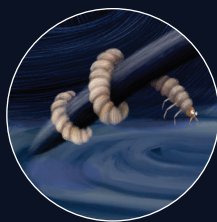
SKINK

A very small and fast lizard. If in danger, it can drop its tail, growing another one later. Its skin colour ranges from copper to brown or black.



TUATARA

Descended from dinosaurs, a tuatara can live up to 100 years. Its teeth are part of its jawbone. Tuatara eggs take a year to hatch.



GRUB

The larvae of beetles, these burrow into the ground or into rotting trees to feed.



PŪPŪ RANGI / KAURI SNAIL

It can grow to more than 7 centimetres in diameter and has a ribbon-like tongue covered with thousands of tiny raspy teeth.