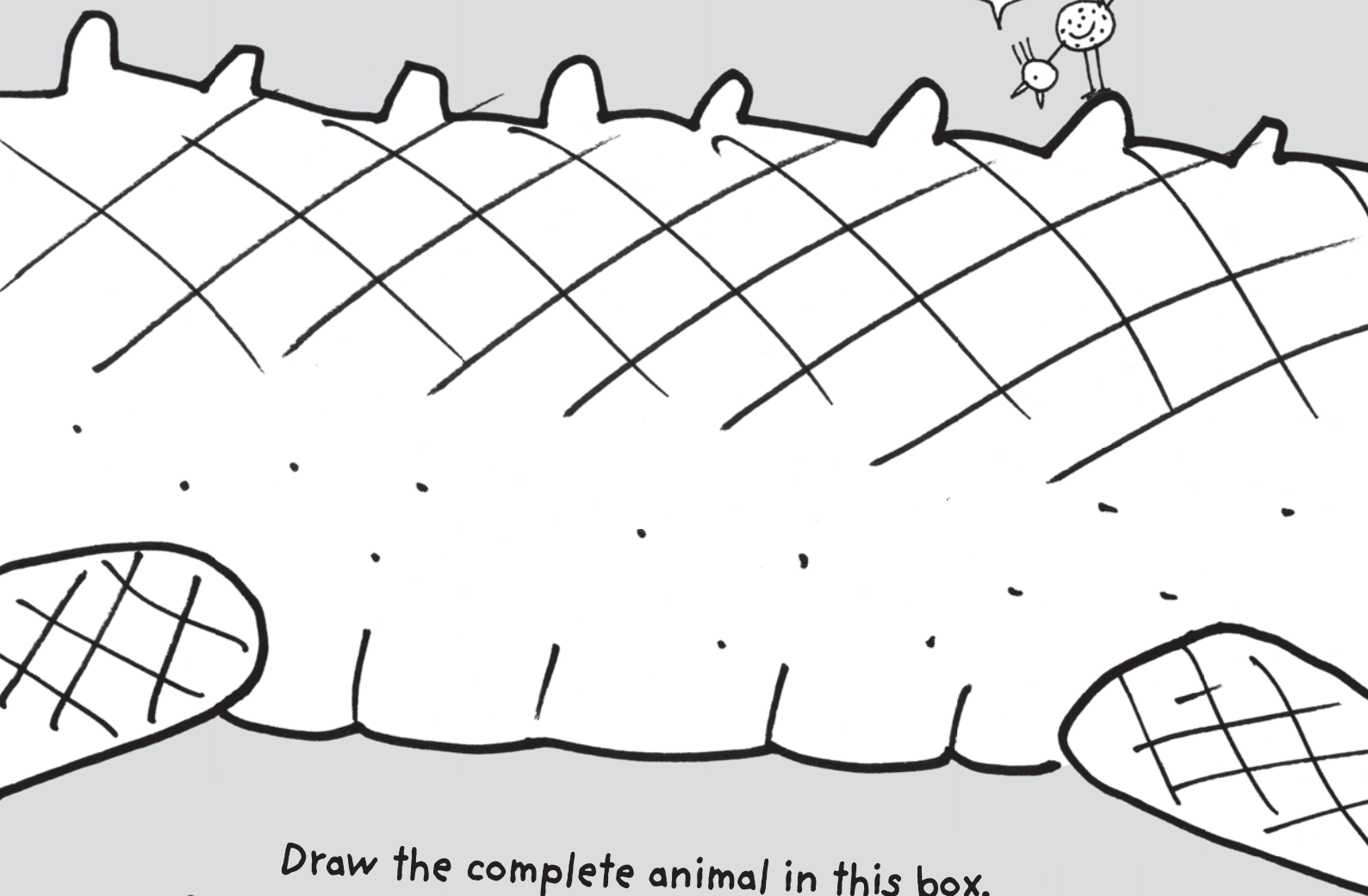
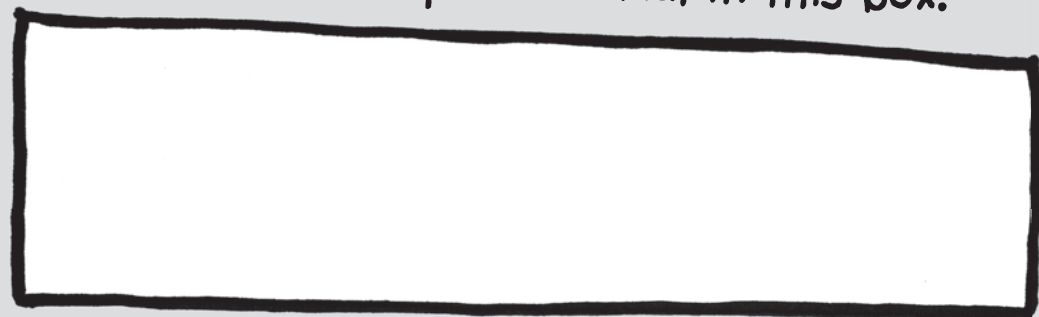


WHAT
ANIMAL
IS THIS?

You don't
scare
me!

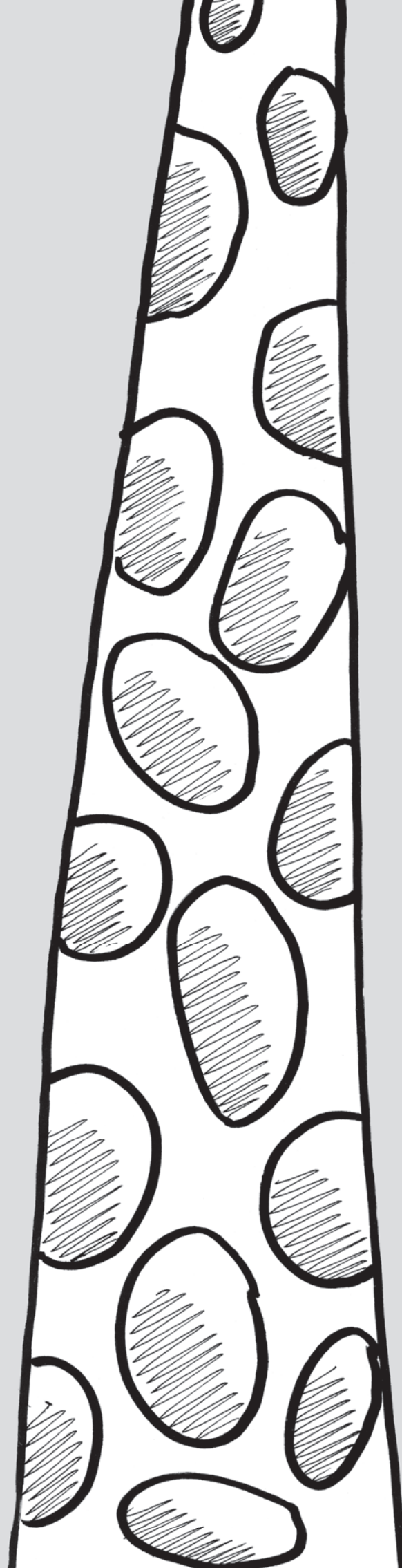
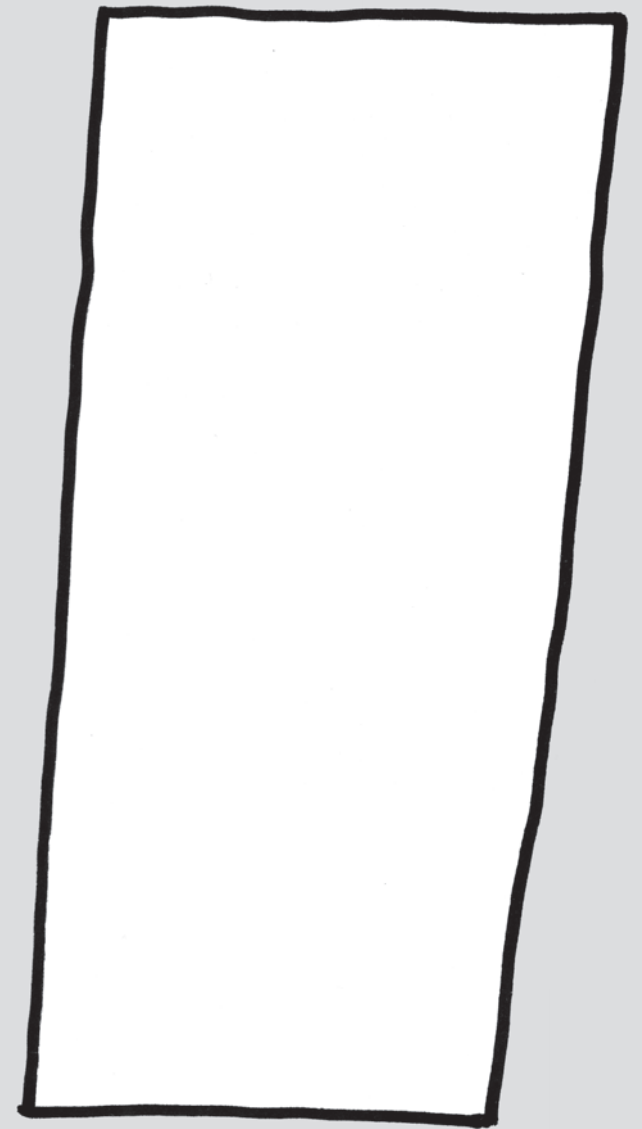


Draw the complete animal in this box.

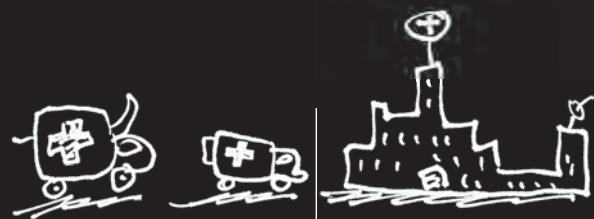


WHAT
ANIMAL
IS THIS?

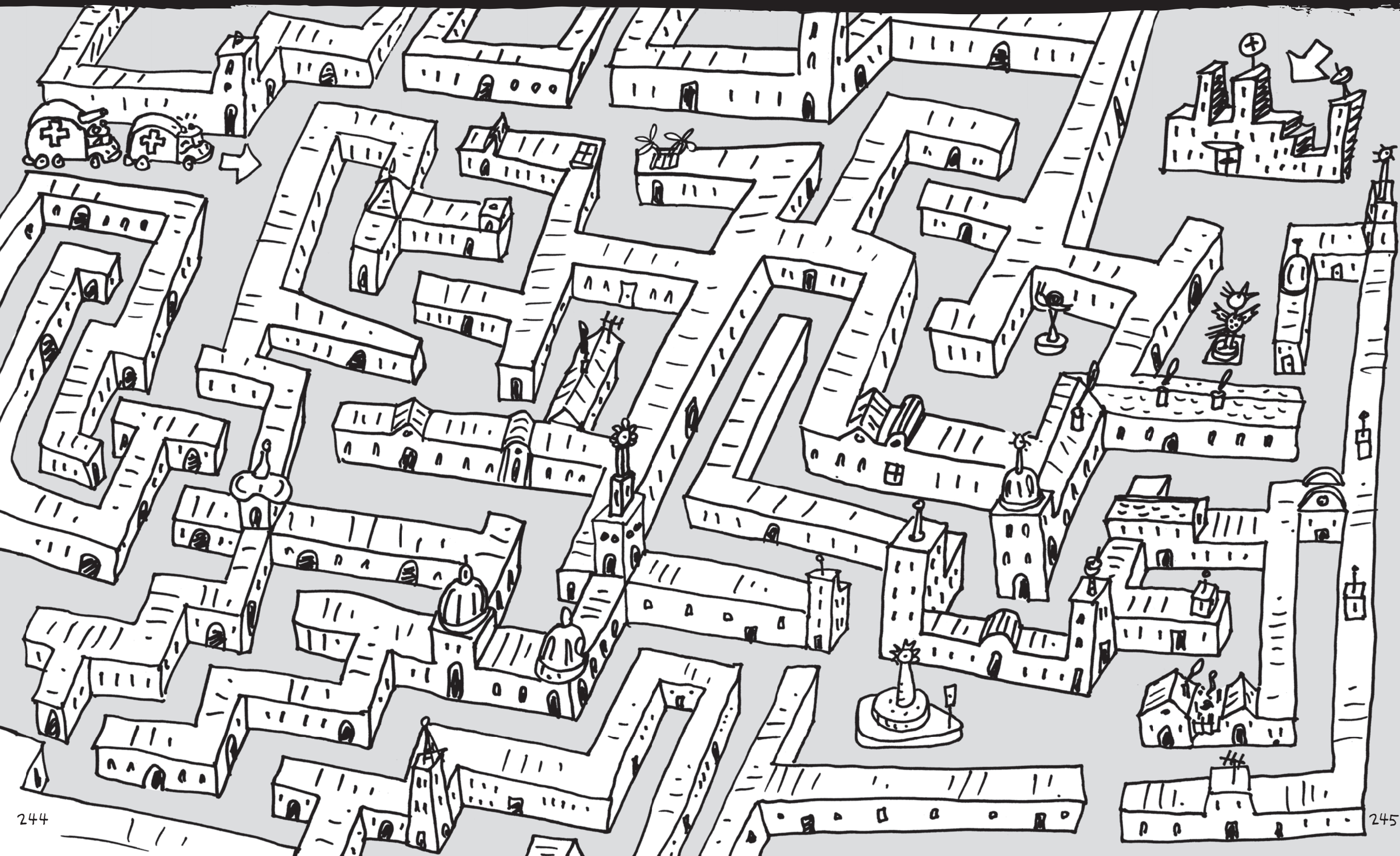
Draw the complete
animal in this box.



An ambulance rushes you and
the elephant to hospital

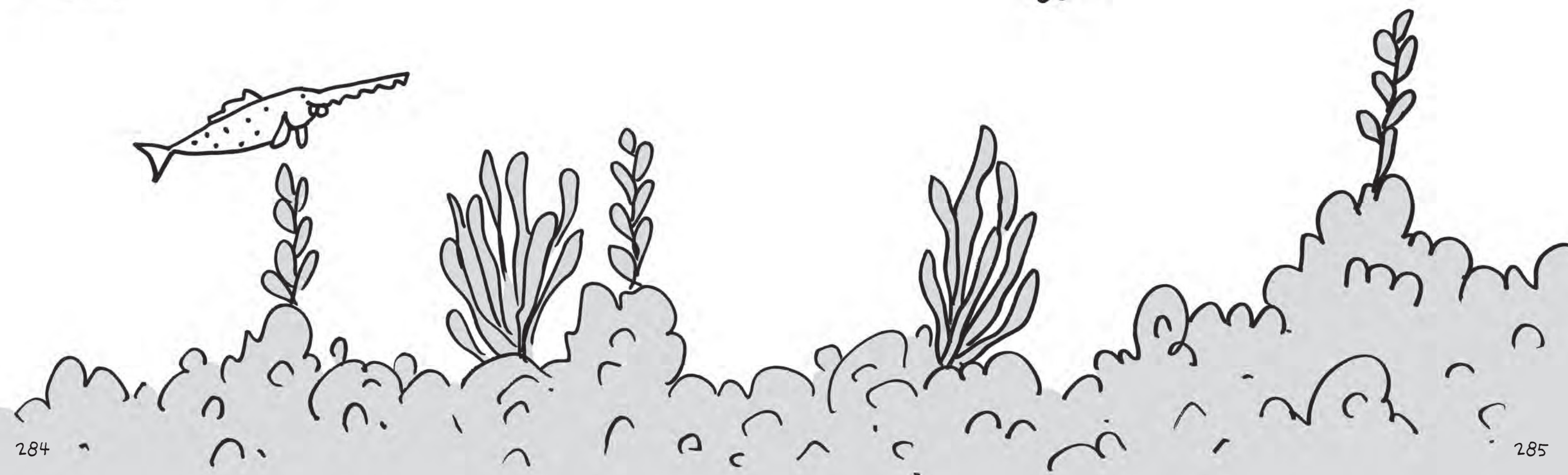
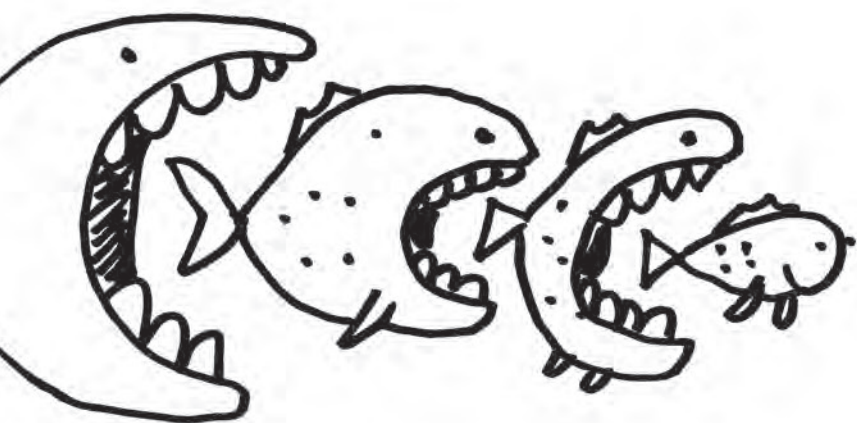


They can't find their way to the hospital...
Help them through the maze.



DRAW
LOTS OF FISH
IN THE SEA
(Fill it up!)

Maybe fish
don't eat
bananas?



FINDING STUFF

Try and find all the things
in this picture

THINGS TO FIND:

- ☆ 3 horses
- ☆ 1 street sweeper
- ☆ 1 stretch limo
- ☆ 1 crocodile
- ☆ 1 pig
- ☆ 1 stretch pig
- ☆ 1 number 8

- ☆ 1 very big frog
- ☆ 1 very small elephant
- ☆ 1 escaped pineapple
- ☆ 1 large letter K
- ☆ 2 santas
- ☆ 1 long man and his very short wife
- ☆ 1 man shouting
- ☆ 1 penguin
- ☆ 1 very big ant
- ☆ 1 runaway baby
- ☆ King Kong
- ☆ 1 banjo player
- ☆ 5 banjo-loving turtles
- ☆ 1 4th birthday party
- ☆ 1 woman with a pet snake
- ☆ 1 building going walking
- ☆ and me... THE BIRD!

